

Valley Views



VOLUME 25, NUMBER 8

AUGUST 2018



Pastor Mike Hill

Who Do You Say That I Am?

By Keith Boyette

The question reverberates down through the ages. When Jesus first asked, “Who do you say that I am?” he directed it to those who knew him best – disciples who had walked with him for an extended period of time – who had seen him in public and private moments. The disciples’ answers are intriguing, but Peter is the one who testifies to the reality of Jesus: “You are the Messiah (the anointed one), the Son of the living God.”

Jesus underscores the critical nature of Peter’s response: “Upon this rock I will build my church, and all the powers of hell will not conquer it.” The church, including The United Methodist Church, exists only because Jesus is building it. The church is grounded in the confession that Jesus is the Messiah, the Son of the living God. The church remains vital only if Jesus remains central to its witness.

One of the first confessions in the early church was the simple, but profound declaration, “Jesus is Lord!” This declaration placed the speaker in a distinctly counter-cultural position. Rather than be shaped by the cultural currents at work in any age, the confessor was saying that the defining reality for the shaping of his/her life was the person, work, and teaching of Jesus.

How we individually and corporately answer Jesus’ question is at the very core of the current storm besieging The UM Church. Our Confession of Faith in Article V declares, “We believe the Christian Church is the community of all true believers under the Lordship of Christ.” Unless our relationship with Jesus is rightly grounded in his supremacy and absolute authority over our lives, corporately we are not a Christian Church and individually we are not Christians.

Despite the doctrinal standards established in our Book of Discipline, segments of the UM Church profess a different understanding of who Jesus is and what it means to follow him. A recent article by Roger Wolsey, an ordained United Methodist pastor in the Rocky Mountain Annual Conference and Director of the Wesley

Foundation at the University of Colorado at Boulder, is representative of this different understanding. In an article entitled, “It’s Time for Progressive Christianity,” Wolsey writes, “Jesus isn’t God. Jesus didn’t die for our sins. . . . Jesus’ resurrection didn’t have to be understood as a physical one for it to be a real and meaningful one. . . Christianity isn’t the only way for humans to experience salvation.” Wolsey’s article contains a revealing caveat: “I do believe that Jesus was divine (in the same way that you and I are)”

The message of Wolsey and others like him radically departs from the core doctrines of the UM Church and are an integral part of the journey that rejects the authority and Lordship of Jesus. This approach affirms “we are devoted to [Jesus], we cherish him, we revere him, we are endeared to him,” but never acknowledges him as Lord – never submits to the person of Jesus as King of kings and Lord of lords. It embraces the idolatry of making Jesus in the image of the beholder rather than acknowledging that we are increasingly to be conformed to the image of Jesus in our lives. And it gives license to redefine any issue to suit a personal agenda rather than seeking the mind of Christ and the will of God. It turns the Christian faith on its head.

This is not a new battle in the church. Every generation has had to confront the false gospel that would deny the Lordship of Jesus. The battle in our generation is being fought out over the church’s sexual ethics, definition of marriage and ordination standards, but at its core, the battle is over how we answer Jesus’ question – Who do you say that I am?

As we journey toward the special General Conference in February 2019, don’t lose sight of the real issue being decided. We are not deciding whether the UM Church will continue as an institution. We are not deciding whether we will redefine the church’s sexual ethics, definition of marriage and ordination standards to depart from the Judaic and Christian teaching derived from God’s revealed word which has been lived out as revealed truth for thousands of years. We are answering Jesus’ question, “Who do you say that I am?” The Wesleyan Covenant Association has made its decision. With Peter, we confess, “You are the Messiah (the anointed one), the Son of the living God.” Jesus is Lord!

Keith Boyette is an elder in the Virginia Annual Conference, and President of the Wesleyan Covenant Association.

This article is one of a series of articles on “Preparing for the Future” offered to clergy and lay leadership to assist in preparing local churches to understand the issues confronting The United Methodist Church as we approach the 2019 special General Conference and decisions that local churches will have to make in the coming months.

Community Breakfast is held Wednesday mornings from 7:00 - 9:00 am at the Elimsport Church. **There will be NO breakfast on Wednesday, August 1st due to Bible School.**



There will be a Blood Drive on Tuesday, August 7th from 2 – 7 at the Elimsport Church Fellowship Hall.

Thank you for the prayers, cards, food and visits when my husband was ill and passed away.



Joann Kroft

- Items for Septembers' newsletter are due August **20th**.
- Items for the weekly bulletin's need to be to the church office by **Wednesday** morning each week.

(Items received after these dates are not guaranteed to be printed.)

The Elimsport Church is in need of an Outdoor Custodian. They will be responsible for mowing, weeding, etc. If interested, please contact Tom Taylor at (570) 547-1849.



Dear Pastor Mike and UM Church,
Thank you for everything you've done for me over the years. Also, thank you for the gift card to the Christian Light Bookstore.



Best Wishes,

gan Chamberlain

Me-

Elimsport Volunteers

Greeters for August

August 5	Donna Taylor
August 12	Marti Anderson
August 19	Cathy Hill
August 26	Sandy Chamberlain

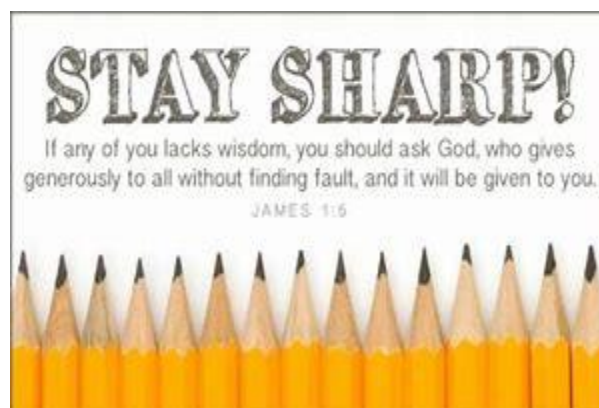
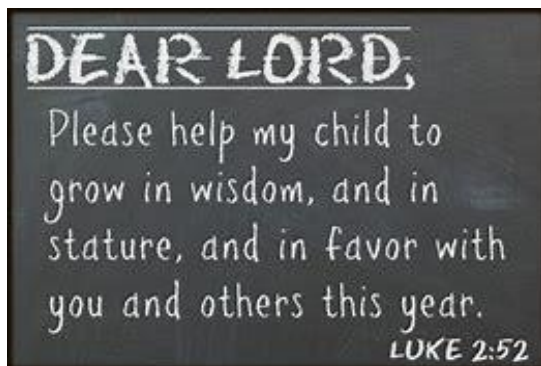
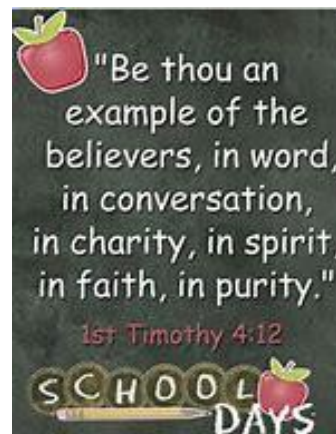


Elimsport & St. John's UMC
Parish,

Thank you to everyone for
the cards, thoughts, and
prayers during the time of
my thyroid surgery and recovery. I am
greatly blessed to know so many people
that truly care about me and to be a part
of a parish that is so loving and supportive,
especially throughout this journey. It all
means so much to me and my family.

With Love,

Ellen Hill





Red Bird Notes

SUMMER 2018

606.598.3155

WWW.RBMISSION.ORG

Jennifer Wilder Leads as New Principal

After twenty-six years of leading as teacher and guidance counselor, Mrs. Jennifer Barbee Wilder, was chosen to continue her leadership at Red Bird Christian School as its new principal. Jennifer has served as a teacher for 17 years including 4 years as a Reading Recovery/Resource Teacher. Since 2009 she has served as Guidance Counselor, been a member of the administrative team, and has served as the Chair of the School Improvement Committee since 2006.



In announcing the selection of Mrs. Wilder as Principal, Ms. Kari Collins, Executive Director, said, "Jennifer is dedicated, well-educated and knowledgeable about Red Bird Christian School. She is well-versed on the school's strengths and areas needing improvement. She is an effective leader and a skilled educator. Jennifer is strong in her faith."

Jennifer's base for leadership is evident in her statement, "The fact that my Lord is mindful of me, loving without conditions, merciful and willing to intercede on my behalf is truly humbling. All that I am and everything I have comes from Him. I want to be God's hands and feet in this place. Red Bird students deserve academic excellence that always points towards our Creator and Lord."

High Marks on Accreditation

Christian Schools International recommended full accreditation for Red Bird Christian School to the accreditation commissions for CSI and AdvancED. The visiting team had high praise regarding our dedicated staff noting, "The academics and culture of Red Bird Christian School have been transformed since the last school improvement plan."

Other highlights included in the site teams report were:

- Red Bird Christian School has a welcoming, "family" atmosphere. Students expressed that they feel wanted and valued in the diverse student body.
- Broadening the enrollment through the international student program has invigorated the school. Many of the international students shared that they valued the Christian perspective.
- The intentional Christian culture of Red Bird Christian School is apparent.
- The music program is bringing together diverse cultures in a Christ-filled and dynamic manner.

95% of Graduates Continue Education

The Red Bird Christian School Class of 2018 typified the diversity noted by the CSI team, but one com-

mon characteristic prevailed – continued education and preparation to take their place as leaders in the world. Eighteen of the twenty-one graduates plan to enter college or community college in the next few weeks, two have begun work force training and one will pursue training and employment as a flight attendant for an airline.

Outgoing Principal Michael Hensley encouraged the graduates to make their mark in history through his baccalaureate address that paid homage to the first superintendent, Dr. John J. DeWall; the first medical doctor, Dr. Harlan Heim; and the first Red Bird School graduate to lead Red Bird Mission and Red Bird Clinic as executive director, Dr. O. Taylor Collins. Aimee Allen Hoskins (Class of 1996), a nurse scientist working with renowned hospitals and universities around the world, shared her "Up" lessons learned at Red Bird School and through life to "Look it up," "Just Show Up," "Chin Up," and "Lighten Up".



Red Bird Christian School is definitely on an upward trend because of leadership (past and present), and support that creates the environment to fulfill the mission of "providing opportunities for spiritual growth and academic excellence for lifelong learning, leadership, and service." Your regular support through prayer and financial gifts is vital to carrying our mission forward next year and for many years to come.

Red Bird Clinic, Inc. Former Coal Miner Hears Again



As a former coal miner and a type 2 diabetic, his hearing has been on the decline for 7 or 8 years. His last doctor visit confirmed 75% hearing loss, and the impact on his daily life has been profound. Without the financial resources to correct his hearing, he has tried to adapt to this limitation. Neighbors told Caleb about the hearing clinics and assistance at Red Bird Mission that might be able to provide hearing aids to improve his quality of life.

Angela Hubbard, Community Health Nurse for Red Bird Clinic, Inc., works hard to organize humanitarian teams to provide hearing clinics to offer screenings, fits, rechecks, and repairs. Because of partnerships with audiology teams like the University of Cincinnati, funding from Hear the World Foundation, and private

donations, the time had come to assist Caleb with hearing aids.

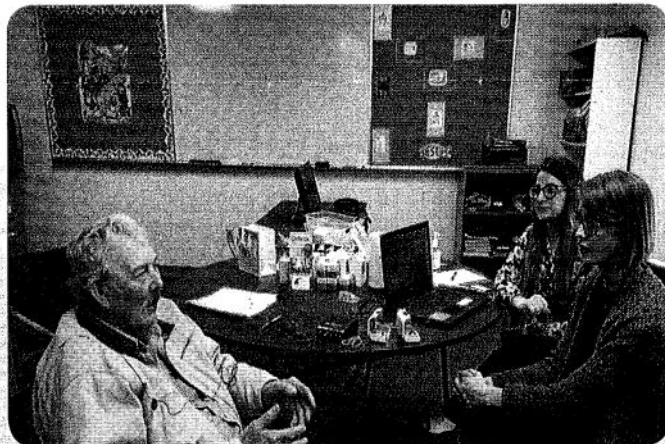
Caleb was tested and then fitted for his first hearing aids. He completed the training to learn how to care for the devices and optimize their performance. Just before leaving with a bag of supplies, instructions, and a grin on his face, to test out his new 'ears', he stopped to list ways that he would benefit from improved hearing.

- He will be able to hear the information clearly at monthly Grow Appalachia meetings to learn how to maximize his production of fresh, organic food in his garden.

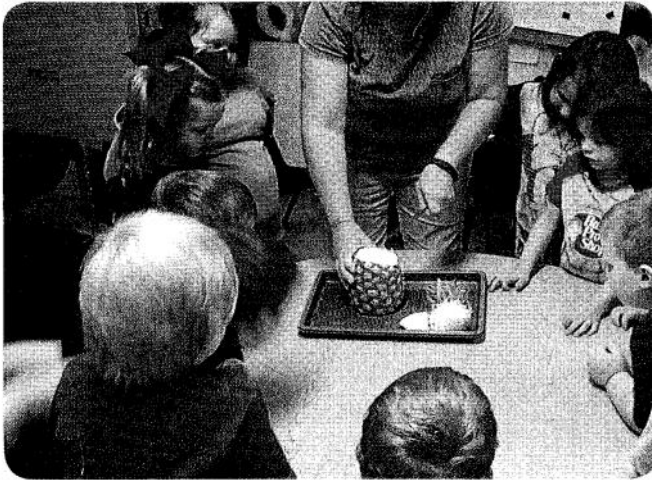
- Talking on the telephone will be possible now allowing him to keep up with his 12 grandchildren easier.
- Socializing in groups will be possible instead of only speaking to one person while facing them.

Caleb left the clinic excited to try out his newfound hearing but thanked Red Bird Mission and the volunteer audiologists for giving him back the ability to interact with his family and friends again.

Support from organizations like Hear the World Foundation, volunteer audiologists, churches and individuals have been vital in providing improved hearing to approximately 600 people in our region in recent years. More partners are needed in the future to continue this important ministry as Hear the World is expected to decrease funding. Donations may be made to Red Bird Clinic, Inc., for Community Health to underwrite Angela's work, or to Red Bird Mission, Inc., for Hearing Health Care needs.



"Is It Taste Testing Day?"



When students arrived in the morning the first question would be, "Is it Taste Testing Day?" That excitement was the result of a project that encouraged the Red Bird Christian School 3 and 4-year old preschool students to try a wide variety of fruits and vegetables. The tastings were one of several nutritional initiatives included in the Red Bird Rural Food Security Project funded by a grant received from the United Methodist Global Health Program.

A weekly taste testing was held at both Queendale and Joy Center class locations for the RBCS Early Childhood Development (ECD) preschool. Each week, a large chart would display a drawing of the fruit or vegetable; the name; if it was fruit or vegetable; and characteristics such as color, size, shape, flavor; and each child placed a sticker on the chart if they tasted it.

A sheet went home with each child containing the food information and the child's response: 'Yum!!' 'It was OK.' or 'Maybe next time.' Twenty-seven different fruits and vegetables were tasted throughout the year. The class also roasted pumpkin seeds, dried apples, and squeezed lemons for lemonade.

All the parents were invited for a taste testing lunch of 32 different items at the annual Easter egg hunt. Prizes were given to the top 3 "grown up" tasters and the top 3 student tasters. The fathers were very competitive with one father trying 30 and two others trying 27 to win a contest.

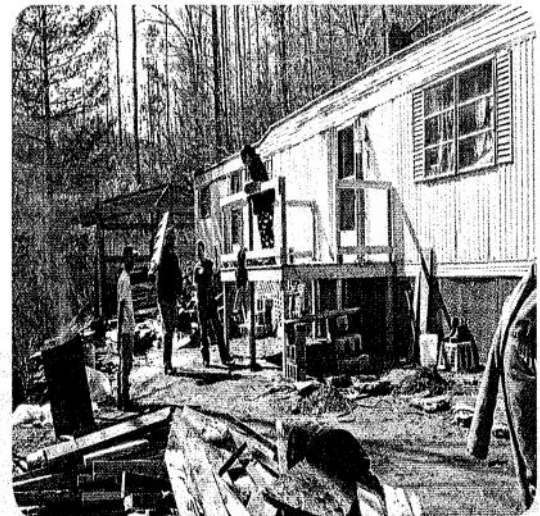
The program finished with a field trip to Pine View Farms where each family picked out a tray of plants (about 48) for their own home garden. Family attendance for the trip was high, and the day was a hit with all participants.

Private donations are needed each year to supplement the fees paid by the families and occasional grants received. Please consider being one of those partners by giving to Red Bird Mission for ECD.

Calling All Mission Teams

Work Camp at Red Bird Mission is a tradition going back to 1947. With last year's numbers a little lower than the previous, we have additional spots to fill this year. We depend on Red Bird Mission Work Campers to provide labor and material cost for the families waiting to have projects completed that they cannot manage themselves. Many wait with hope that a roof can be fixed before walls are ruined. Some are in need of a handicap ramp to get out of the house for doctor appointments and are essentially confined to their house until help comes in the form of a RBM Work Camp group.

For \$375 per person you can make a huge impact for a family's physical wellbeing as well as spiritually. Call Susan in the Work Camp office to reserve your group spot. Applications and more information can be found on our website - rbmission.org/work-camp.



Certified Processors Utilize New Red Bird Valley Kitchen

The Red Bird Valley (RBV) Kitchen is already fulfilling its purpose to provide a place for Grow Appalachia members to create value added food products that can be sold in Kentucky Farmers Markets and Certified Roadside Stands.



70 Queendale Center
Beverly, KY 40913-9607

NONPROFIT
US POSTAGE
PAID
LONDON, KY
PERMIT #100



35580

Elmsport Umc
16145 S State Route 44
Allenwood PA 17810-9421

1
2

Faithfulness

What does it mean to be faithful?

Dictionary.com defines faithful as, 'loyal, constant, staunch, steadfast, resolute meaning firm in adherence to whatever one owes allegiance. Faithful implies unswerving adherence to a person or thing or to the oath or promise by which a tie was contracted'.

Faithfulness was the theme for the group numbering more than 30 that headed to Eagle Rock Camp over a weekend. The group of staff and families made the



trip to bond, fellowship together, and grow spiritually at Eagle Rock Camp. Eagle Rock has been a special place for the scores of students that have attended the annual high school retreat organized by Mrs. Angela Crawford, Spanish teacher at Red Bird Christian School. Many staff attended for the first time since the focal group previously

was students in grades 10-12.

Rain throughout the weekend could have put a damper on the weekend, but God had other plans for those in attendance. A break on Saturday morning allowed the group to do the usual service work of cleaning and minor maintenance projects around the center. Normally, outdoor activities like hiking, canoeing, ropes courses and paint ball are provided by staff at Eagle Rock Camp, but a rainy forecast on Saturday afternoon led to a switch in plans to visit a nearby "trading post" allowing time together as a group.

God's presence was felt as students and adults took turns sharing meaningful songs during worship time. Teachers Mark Smallwood and Jeremy Baker, along with Tim Crawford, Development Director, lead the scripture studies and discussion around the theme. Many recounted God's faithfulness to them and being inspired to remain faithful to God throughout the trials and difficulties of serving and living for Christ. In the end, there was a sense among all of being spiritually refreshed and strengthened for continuing the ministry each one does at Red Bird Mission.



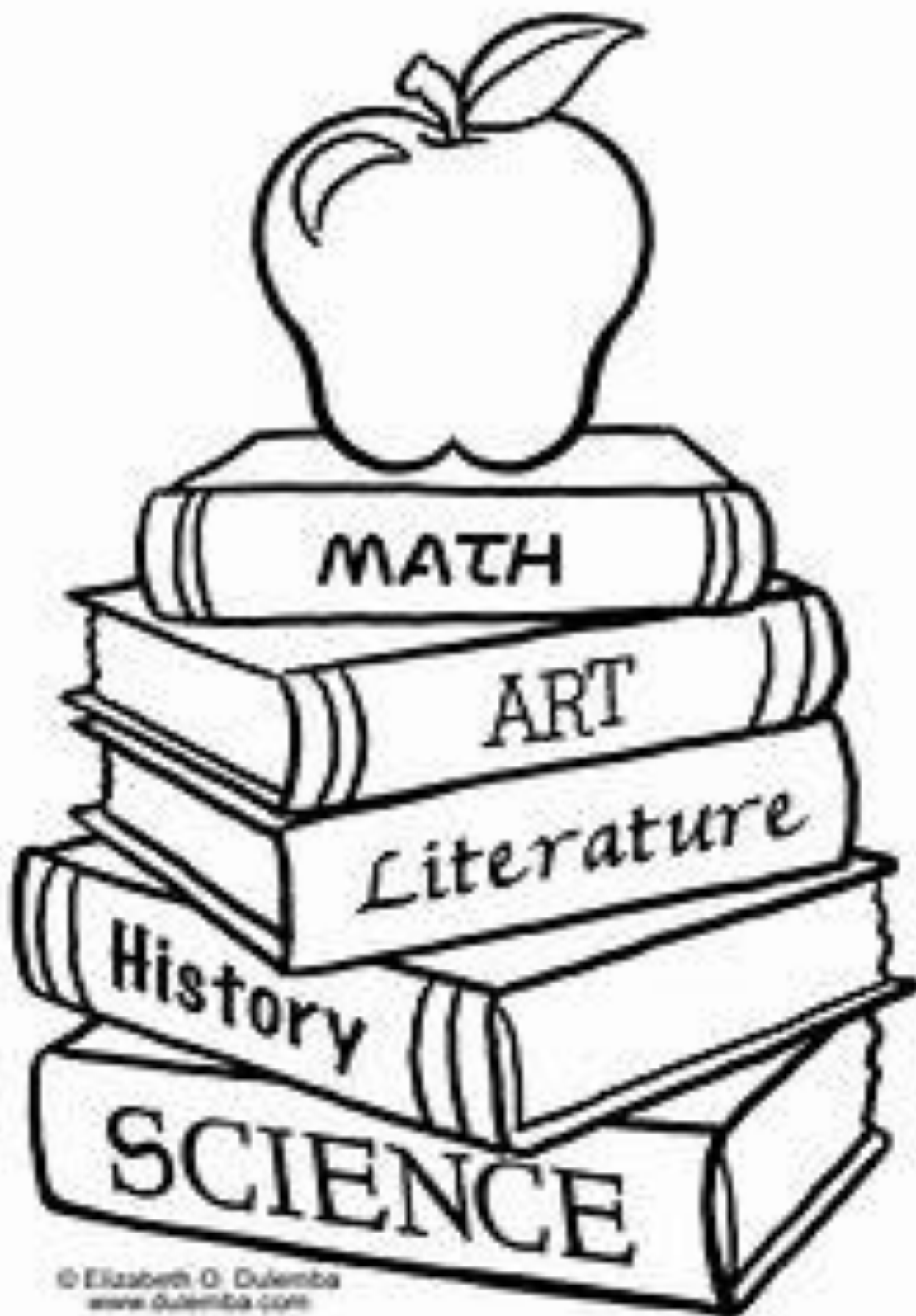
Ways to Support

Secure online donations - www.rbmission.org
Donations by phone - 888-726-3459 (toll free)
Donations by bank transfer - 888-726-3459 (toll free)
Copy paper & USB drives for school

Furniture & household items
Make RB Mission or RB Clinic your Amazon Smile charity
Tyson A+ labels, Bostons for Education
Sponsor an Appalachian Craft Fair in your church

For a more complete listing of needs, click "Ways to Support" on our home page

Kid's Corner



ELIMSPORT VALLEY UNITED METHODIST PARISH

Worship Schedule:

Elimsport UMC

Worship 9:00 am
Sunday School 10:30 am

St. John's UMC

Sunday School 9:15 am
Worship 10:30 am

Parish Youth Group

Check weekly Bulletin for current schedule and events
(at Elimsport)

Parish Bible Study

Varies according to the season.

Parish Office:

16145S. RT 44 HWY
Allenwood, PA 17810

Parsonage Phone:

(570) 547-1386

Pastor Mike's Cell:

(570) 974-8590

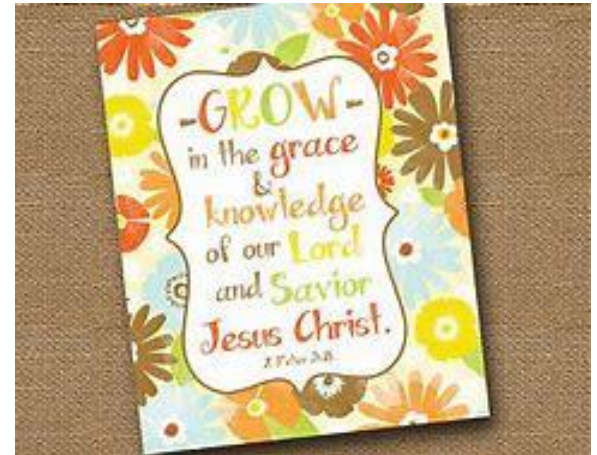
Parish Website:

www.evpumc.org

Parish email:

elimsportumc@gmail.com

www.evpumc.org



Our Mission Statement at Elimsport UMC



We gather together as a community of Christian believers to worship, fellowship, and to learn more about God. By the unity of the Spirit and the support of each other, we are able to reach out to the community and the world.

Our Mission Statement at St. John's UMC



The purpose of St. John's is to both evangelize and nurture. We are called to show God's love in our world by giving aid and by spreading the Good News of Christ. We in turn provide an atmosphere for nurturing where Biblical truths are shared enabling people to become spiritually enriched. By providing this, people will learn and through learning, become more effective witnesses.